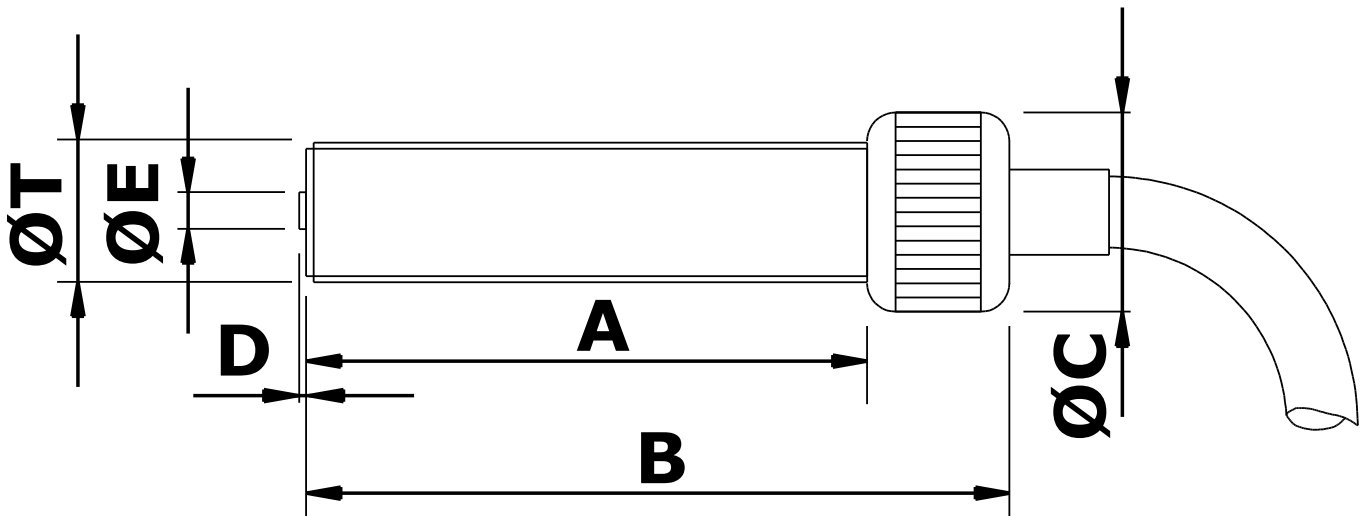


# MPU1140 Magnetic Pickup



## Mechanical specification

dimensions in mm unless otherwise stated

<i>Dimension</i>		<i>Part number</i>
A	40	
B	51 nominal	
ØC	Ø14 medium straight knurled cap	
D	0.4 nominal	
ØE	Ø2.54 Pole Piece	
ØT	3/8" x 24 tpi UNF-2A	<b>MPU1140-I</b>
or	M10 x 1.0 6g	<b>MPU1140-M</b>
<b>Main body material</b>	Stainless Steel	
<b>End Bobbin face</b>	Glass filled Nylon or Polypropylene	
<b>Locknut</b>	1 off supplied as standard	

## Electrical specification

**Resistance** 350Ω nominal @ 20°C

**Inductance**

**Operating temperature range** -10°C to +85°C

**Voltage output**

**Minimum speed**

**Termination** 2-core (7/0.2) screened cable x 2 metres

For the full data sheet and/or a quotation please contact us: [sales@logitechelectronics.com](mailto:sales@logitechelectronics.com)

MADE IN THE UK

*Reliability, Guaranteed*



**Logitech Electronics Limited**

e: sales@logitechelectronics.com  
t: +44 (0)1952 820444

*Design and Manufacture of Electronic Systems and Instrumentation. Supply of Sensors and Transducers*

www.logitechelectronics.com

Lane End | Church Aston | Newport | Shropshire | TF10 9JJ | UK