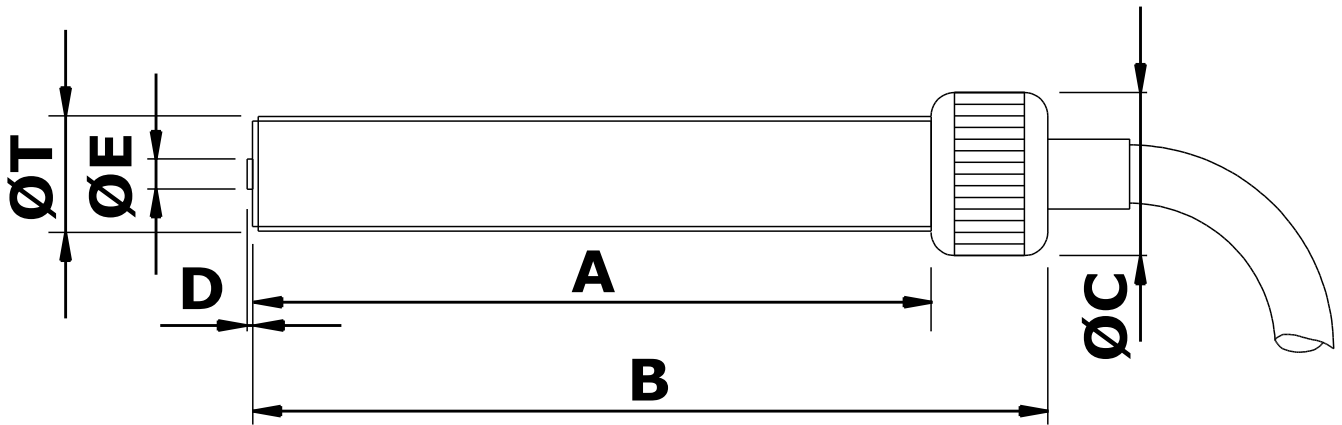


Captive Cable Type  
 Extended Temperature  
 Higher Output  
 Low Halogen  
 Speed Sensor

# MPU1159HTX Magnetic Pickup



## Mechanical specification

dimensions in mm unless otherwise stated

<i>Dimension</i>		<i>Part number</i>
<b>A</b>	59	
<b>B</b>	71 nominal	
<b>ØC</b>	Ø14 medium straight knurled cap	
<b>D</b>	0.4 nominal	
<b>ØE</b>	Ø2.54 Pole Piece	
<b>ØT</b>	3/8" x 24 tpi UNF-2A	<b>MPU1159HTX-I</b>
<b>or</b>	M10 x 1.0 6g	<b>MPU1159HTX-M</b>
<b>Main body material</b>	Stainless Steel	
<b>End Bobbin face</b>	Glass Filled Nylon	
<b>Locknut</b>	1 off supplied as standard	

# Electrical specification

**Resistance** 900Ω nominal @ 20°C

**Inductance**

**Polarity** White lead is positive with respect to Black lead as target approaches

**Operating temperature range** -54°C to +125°C

**Voltage output**

**Minimum speed**

**Termination** Twin Raychem Type 100 0.5mm<sup>2</sup> low halogen leads encased in interwoven braid screen with low smoke zero halogen overall sheath x 2 metres

For the full data sheet and/or a quotation please contact us: [sales@logitechelectronics.com](mailto:sales@logitechelectronics.com)

MADE IN THE UK

*Reliability, Guaranteed*



**Logitech Electronics Limited**

e: [sales@logitechelectronics.com](mailto:sales@logitechelectronics.com)  
t: +44 (0)1952 820444

*Design and Manufacture of Electronic Systems and Instrumentation. Supply of Sensors and Transducers*  
[www.logitechelectronics.com](http://www.logitechelectronics.com)

Lane End | Church Aston | Newport | Shropshire | TF10 9JJ | UK