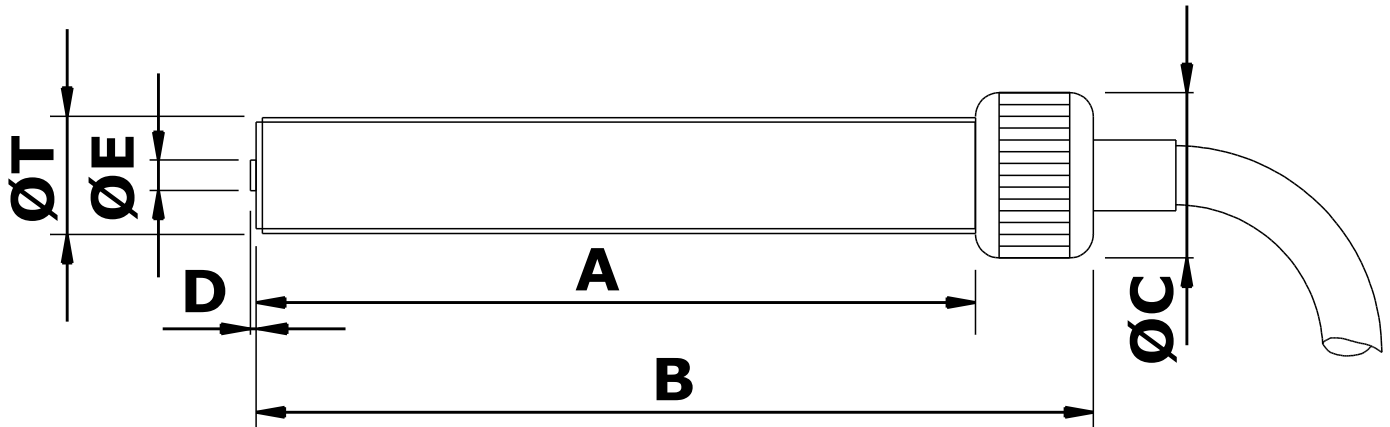


MPU1162TX Magnetic Pickup



Mechanical specification

dimensions in mm unless otherwise stated

<i>Dimension</i>		<i>Part number</i>
A	62	
B	74	
ØC	Ø14 medium straight knurled cap	
D	0.4 nominal	
ØE	Ø2.54 Pole Piece	
ØT	3/8" x 24 tpi UNF-2A	MPU1162TX-I*
or	M10 x 1.0 6g	MPU1162TX-M*
Main body material	Stainless Steel	
End Bobbin face	Glass filled Nylon or Polypropylene	
Locknut	1 off supplied as standard	

* Previous code MPU1102TX-I / MPU1102TX-M

Electrical specification

Resistance 350Ω nominal @ 20°C

Inductance

Operating temperature range -30°C to +125°C

Voltage output

Minimum speed

Termination Type 44 2-core screened cable x 2 metres

For the full data sheet and/or a quotation please contact us: sales@logitechelectronics.com

MADE IN THE UK

Reliability, Guaranteed



Logitech Electronics Limited

e: sales@logitechelectronics.com

t: +44 (0)1952 820444

Design and Manufacture of Electronic Systems and Instrumentation. Supply of Sensors and Transducers

www.logitechelectronics.com

Lane End | Church Aston | Newport | Shropshire | TF10 9JJ | UK