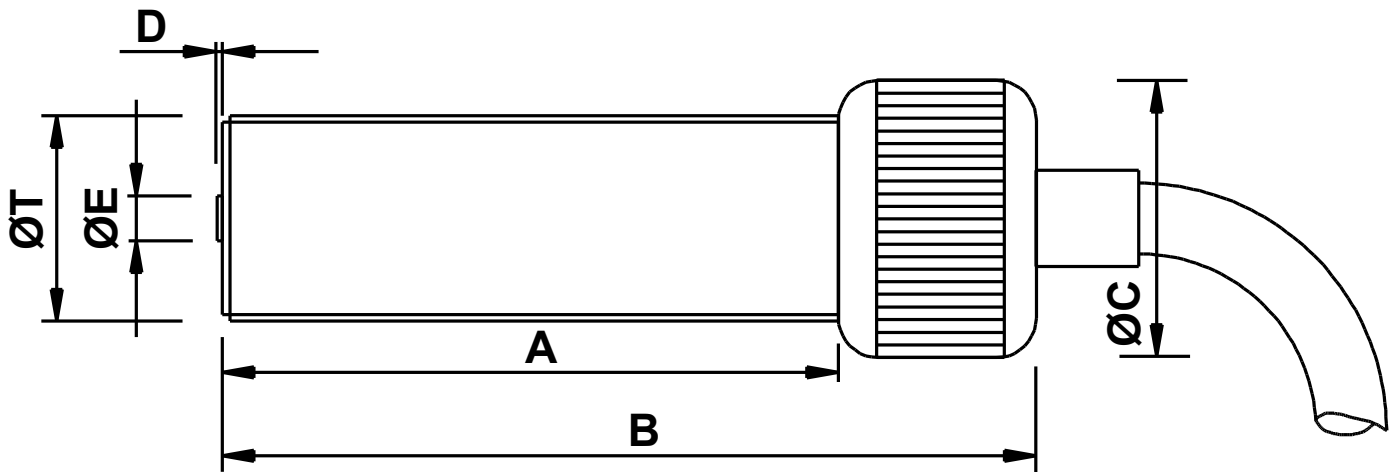


MPU1648 Magnetic Pickup



Mechanical specification

dimensions in mm unless otherwise stated

<i>Dimension</i>		<i>Part number</i>
A	48	
B	64	
ØC	Ø22 medium straight knurled cap	
D	0.4 nominal	
ØE	Ø3.17 Pole Piece	
ØT	5/8" x 18 tpi UNF-2A	MPU1648-I*
or	M16 x 1.5 6g	MPU1648-M*
Main body material	Stainless Steel	
End Bobbin face	Glass Filled Nylon or Polypropylene	
Locknut	1 off supplied as standard	

* Previous code MPU1151-I/3m / MPU1151-M/3m

Electrical specification

Resistance 350Ω nominal @ 20°C

Inductance

Operating temperature range -10°C to +85°C

Voltage output

Minimum speed

Termination 2-core (7/0.2) screened cable x 3 metres

For the full data sheet and/or a quotation please contact us: sales@logitechelectronics.com

MADE IN THE UK

Reliability, Guaranteed



Logitech Electronics Limited

e: sales@logitechelectronics.com
t: +44 (0)1952 820444

Design and Manufacture of Electronic Systems and Instrumentation. Supply of Sensors and Transducers
www.logitechelectronics.com

Lane End | Church Aston | Newport | Shropshire | TF10 9JJ | UK