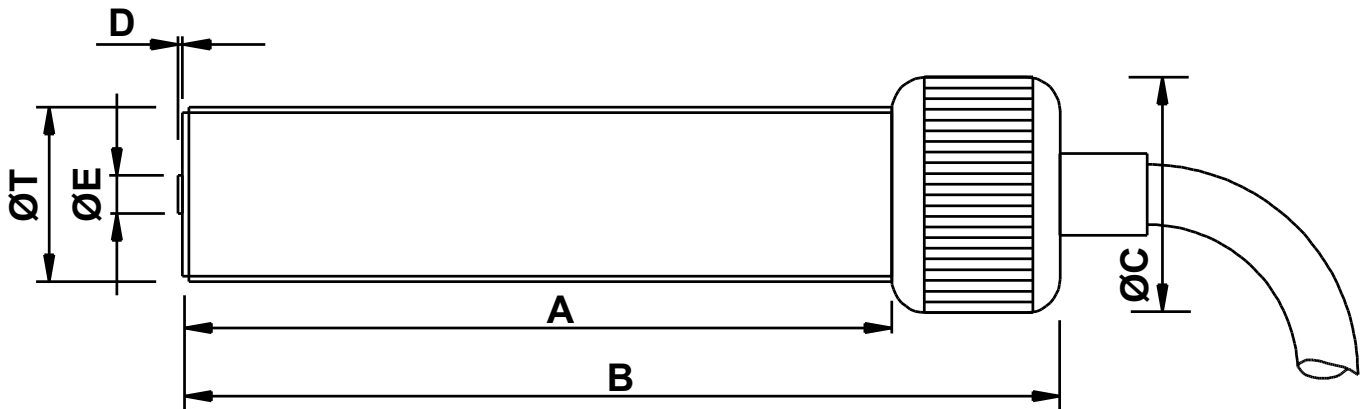


MPU1665 Magnetic Pickup



Mechanical specification

dimensions in mm unless otherwise stated

<i>Dimension</i>		<i>Part number</i>
A	65	
B	82 nominal	
ØC	Ø22 medium straight knurled cap	
D	0.4 nominal	
ØE	Ø3.17 Pole Piece	
ØM	n/a	
ØT	5/8" x 18 tpi UNF-2A	MPU1665-I*
or	M16 x 1.5 6g	MPU1665-M*
Main body material	Stainless Steel	
End Bobbin face	Glass filled Nylon or Polypropylene	
Locknut	1 off supplied as standard	

*Previous code MPU1163-I/2.5" / MPU1163-M/2.5"

Electrical specification

Resistance 350Ω nominal @ 20°C

Inductance

Operating temperature range -10°C to +85°C

Voltage output

Minimum speed

Termination 2-core (7/0.2) screened cable x 2 metres

For the full data sheet and/or a quotation please contact us: sales@logitechelectronics.com

MADE IN THE UK

Reliability, Guaranteed



Logitech Electronics Limited

e: sales@logitechelectronics.com

t: +44 (0)1952 820444

Design and Manufacture of Electronic Systems and Instrumentation. Supply of Sensors and Transducers

www.logitechelectronics.com

Lane End | Church Aston | Newport | Shropshire | TF10 9JJ | UK