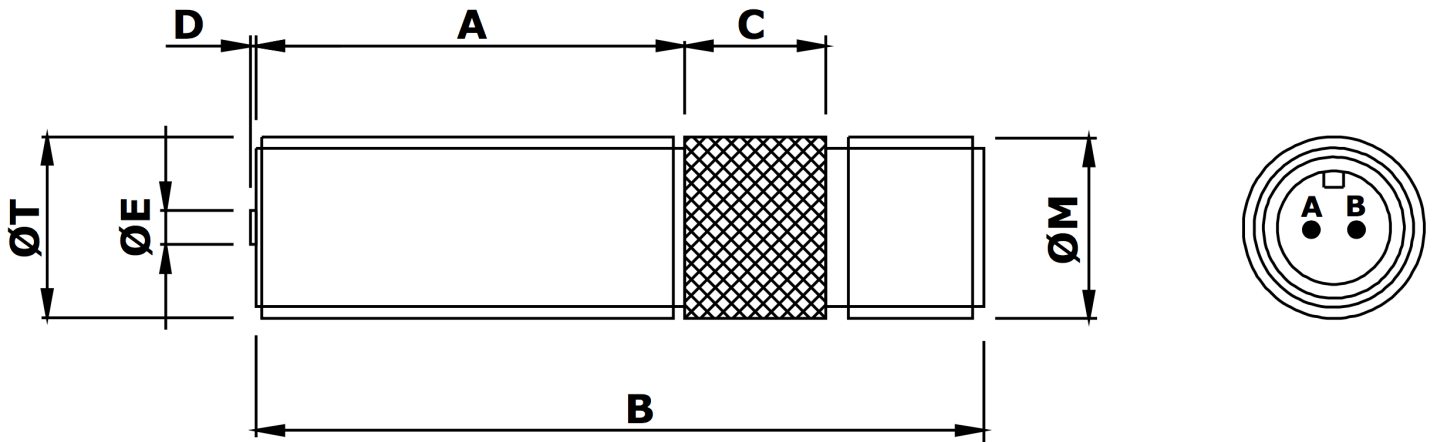


# MPU3638 Magnetic Pickup



## Mechanical specification

dimensions in mm unless otherwise stated

<i>Dimension</i>		<i>Part Number</i>
<b>A</b>	38	
<b>B</b>	64	
<b>C</b>	12 medium diamond knurl	
<b>D</b>	0.4 nominal	
<b>ØE</b>	Ø3.2 Pole Piece	
<b>ØM</b>	5/8" x 24 tpi UNEF-2A (connector thread)	
<b>ØT</b>	5/8" x 18 tpi UNF-2A (body thread)	<b>MPU3638-I*</b>
<b>or</b>	M16 x 1.5 6g	<b>MPU3638-M*</b>
<b>Main body material</b>	Stainless Steel	
<b>End Bobbin face</b>	Glass Filled Nylon or Polypropylene	
<b>Locknut</b>	1 off supplied as standard	

\*Previous code MPU1301-I / MPU1301-M

## Electrical specification

**Resistance** 350Ω nominal @ 20°C

**Inductance**

**Operating temperature range** -40°C to + 120°C

**Voltage output**

**Minimum speed**

**Termination** MS (screw) 10SL-4P (2-pin integral plug)

**Mating connector**  
[see note 3] MS (screw 10SL-4S (2-pin line socket)

For the full data sheet and/or a quotation please contact us: [sales@logitechelectronics.com](mailto:sales@logitechelectronics.com)

MADE IN THE UK

*Reliability, Guaranteed*



**Logitech Electronics Limited**

e: [sales@logitechelectronics.com](mailto:sales@logitechelectronics.com)  
t: +44 (0)1952 820444

*Design and Manufacture of Electronic Systems and Instrumentation. Supply of Sensors and Transducers*  
[www.logitechelectronics.com](http://www.logitechelectronics.com)

Lane End | Church Aston | Newport | Shropshire | TF10 9JJ | UK

