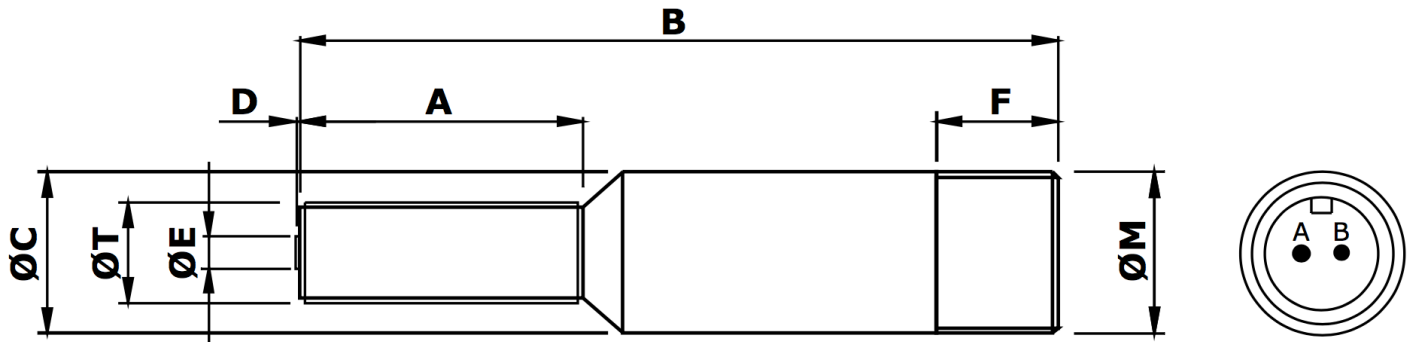


MPU4128 Magnetic Pickup



Mechanical specification

dimensions in mm unless otherwise stated

<i>Dimension</i>		<i>Part number</i>
A	28	
B	75 nominal	
ØC	Ø16 (no knurl)	
D	0.4 nominal	
ØE	Ø2.54 Pole Piece	
F	15	
ØM	5/8" x 24 tpi UNEF-2A (connector thread)	
ØT	3/8" x 24 tpi UNF-2A (body thread)	MPU4128-I
<i>or</i>	M10 x 1.0 6g	MPU4128-M
Main body material	Stainless Steel	
End Bobbin face	Polypropylene	
Locknut	2 off supplied as standard	

Electrical specification

Resistance 350Ω nominal @ 20°C

Inductance

Operating temperature range -20°C to +120°C

Voltage output

Minimum speed

Termination MS screw 10SL-4P (2-pin integral plug)

Mating connector MS screw 10SL-4S (2-pin line socket)

For the full data sheet and/or a quotation please contact us: sales@logitechelectronics.com

MADE IN THE UK

Reliability, Guaranteed



Logitech Electronics Limited

e: sales@logitechelectronics.com
t: +44 (0)1952 820444

Design and Manufacture of Electronic Systems and Instrumentation. Supply of Sensors and Transducers

www.logitechelectronics.com

Lane End | Church Aston | Newport | Shropshire | TF10 9JJ | UK