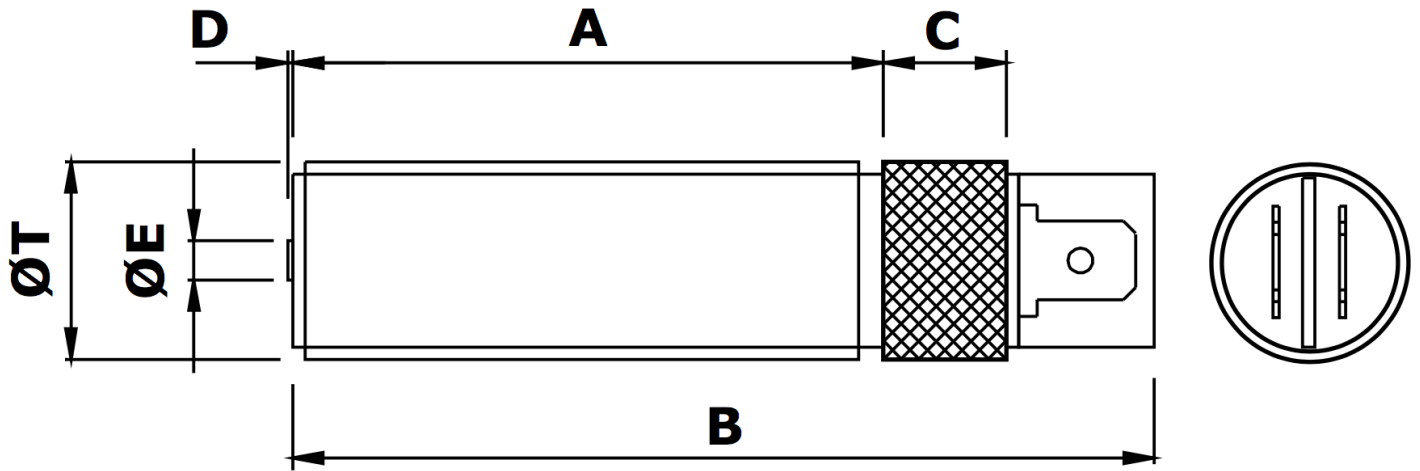


MPU5648 Magnetic Pickup



Mechanical specification

dimensions in mm unless otherwise stated

<i>Dimension</i>		<i>Part number</i>
A	48	
B	70	
C	10 Medium diamond knurl	
D	0.4 nominal	
ØE	Ø3.17 Pole Piece	
ØT	5/8" x 18 tpi UNF-2A	MPU5648-I*
or	M16 x 1.5 6g	MPU5648-M*
Main body material	Stainless Steel	
End Bobbin face	Glass filled Nylon or Polypropylene	
Locknut	1 off supplied as standard	

*Previous code MPU1501-I / MPU1501-M

Electrical specification

Resistance 350 Ω nominal @ 20°C

Inductance

Operating temperature range -40°C to +120°C

Voltage output

Minimum speed

Termination 2 x 1/4" Push-on blade terminal

Mating connector 2 x 1/4" Push-on blade receptacle

For the full data sheet and/or a quotation please contact us: sales@logitechelectronics.com

MADE IN THE UK

Reliability, Guaranteed



Logitech Electronics Limited

e: sales@logitechelectronics.com

t: +44 (0)1952 820444

Design and Manufacture of Electronic Systems and Instrumentation. Supply of Sensors and Transducers

www.logitechelectronics.com

Lane End | Church Aston | Newport | Shropshire | TF10 9JJ | UK