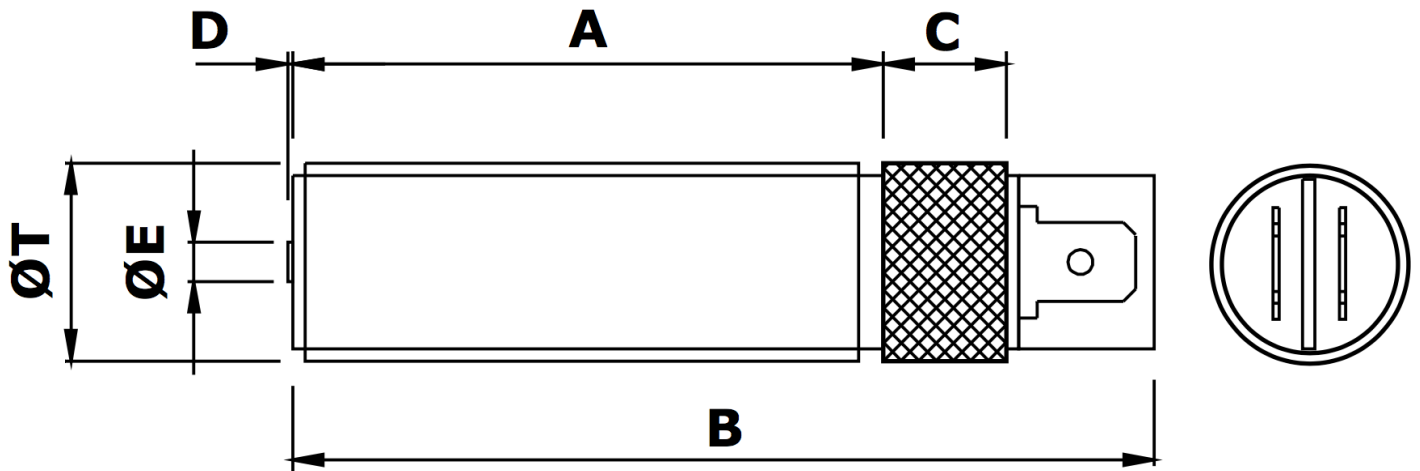


Blade Connector Type  
 Higher Output  
 Speed Sensor  
 Special Build for Flowmeters

# MPU5648H Magnetic Pickup



## Mechanical specification

dimensions in mm unless otherwise stated

<i>Dimension</i>		<i>Part number</i>
<b>A</b>	48	
<b>B</b>	70	
<b>C</b>	10 medium diamond knurl	
<b>D</b>	0.4 nominal	
<b>ØE</b>	Ø3.17 Moveable Pole Piece	
<b>ØT</b>	5/8" x 18 tpi UNF-2A	<b>MPU5648H-I*</b>
<b>or</b>	M16 x 1.5 6g	<b>MPU5648H-M*</b>
<b>Main body material</b>	Stainless Steel	
<b>End Bobbin face</b>	Glass Filled Nylon or Polypropylene	
<b>Locknut</b>	1 off supplied as standard	

\*Previous code MPU2548H-I / MPU2548H-M

# Electrical specification

**Resistance** 850Ω nominal @ 20°C

**Inductance**

**Operating temperature range** -20°C to +120°C

**Voltage output**

**Minimum speed**

**Termination** 2 x 1/4" push-on blade terminal

**Mating connector** 2 x 1/4" push-on blade receptacle

For the full data sheet and/or a quotation please contact us: [sales@logitechelectronics.com](mailto:sales@logitechelectronics.com)

MADE IN THE UK

*Reliability, Guaranteed*



**Logitech Electronics Limited**

e: [sales@logitechelectronics.com](mailto:sales@logitechelectronics.com)  
t: +44 (0)1952 820444

*Design and Manufacture of Electronic Systems and Instrumentation. Supply of Sensors and Transducers*

[www.logitechelectronics.com](http://www.logitechelectronics.com)

Lane End | Church Aston | Newport | Shropshire | TF10 9JJ | UK