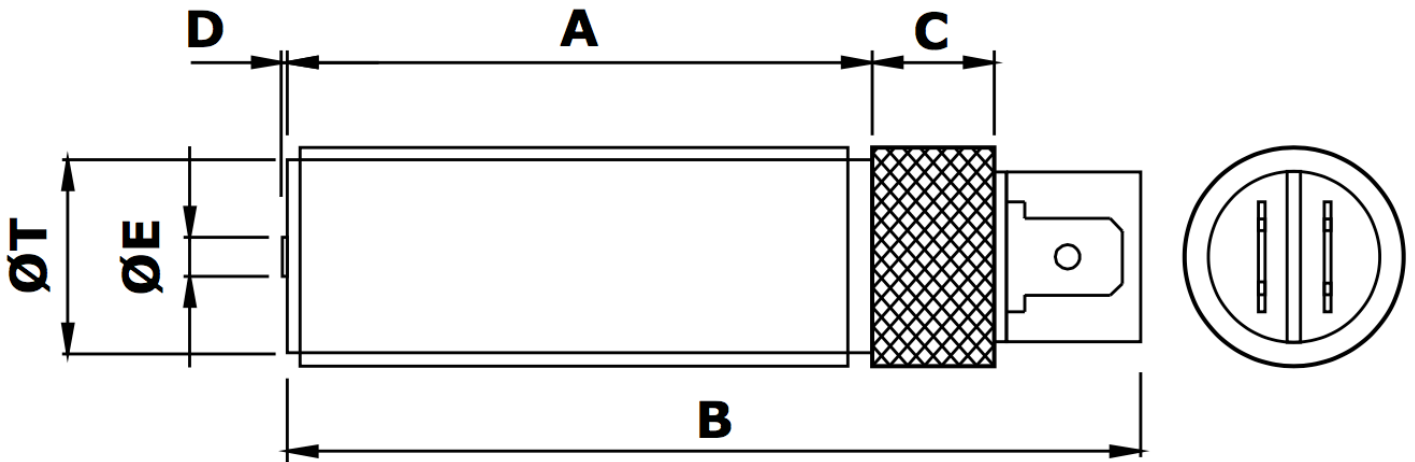


MPU5848 Magnetic Pickup



Mechanical specification

dimensions in mm unless otherwise stated

<i>Dimension</i>	<i>Part number</i>
A 48	
B 70	
C 10 medium diamond knurl	
D 0.4 nominal	
ØE Ø3.17 Pole Piece	
ØT 3/4" x 16 tpi UNF-2A	MPU5848-I*
or M18 x 1.5 6g	MPU5848-M*
Main body material Stainless Steel	
End Bobbin face Glass filled Nylon or Polypropylene	
Locknut 1 off supplied as standard	

*Previous code MPU1801-I / MPU1801-M

Electrical specification

Resistance 350Ω nominal @ 20°C

Inductance

Operating temperature range -40°C to +120°C

Voltage output

Minimum speed

Termination 2 x 1/4" push-on blade terminal

Mating connector 2 x 1/4" push-on blade receptacle

For the full data sheet and/or a quotation please contact us: sales@logitechelectronics.com

MADE IN THE UK

Reliability, Guaranteed



Logitech Electronics Limited

e: sales@logitechelectronics.com
t: +44 (0)1952 820444

Design and Manufacture of Electronic Systems and Instrumentation. Supply of Sensors and Transducers
www.logitechelectronics.com

Lane End | Church Aston | Newport | Shropshire | TF10 9JJ | UK