

SigPro-USB Signal Processing Module

with USB interface

Frequency to Voltage converter

User-selectable as 0-5V, 1-5V, 0-10V, or 2-10V

Frequency to Current converter

User selectable as 0-20mA, or 4-20mA

Frequency to TTL compatible digital output

5V TTL compatible square wave with frequency scaled output

Tachometer

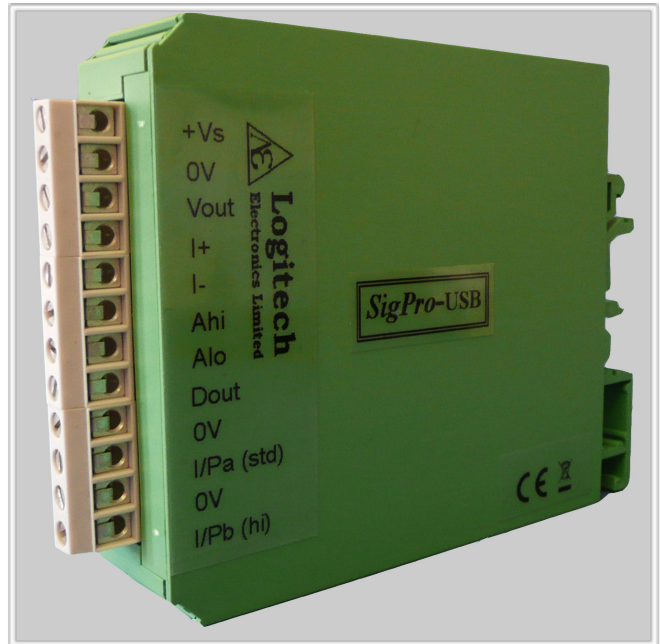
Scaled instantaneous rate, max/min rate and totalised count. User configured high and low alarm outputs. Rate data can be monitored in real-time via USB, max & min rates and total count are retained in memory for later recall.

Typical inputs

User-selectable input sensitivity, suitable for a wide range of input devices. Ideal signal conditioner for magnetic pickups, reed switches and Hall effect sensors.

Standard Features

Input options	User selects either high or standard sensitivity or reed relay
Input sensitivity	User adjustment is available via an on-screen slider control
Output options	User selects either the analogue voltage or analogue current option. In either case an additional digital output is provided which is a divided version of the input frequency.
Alarm outputs	User definable high and low alarm (NPN)
Fast update	250 milliseconds



Installation

The module is housed in a compact universal TS35 and TS32 DIN rail mounting plastic box for rapid and simple clip-in installation

Power supply

12V to 30V DC power can be connected via the terminal block or via a standard 2.5mm power connector

Connections

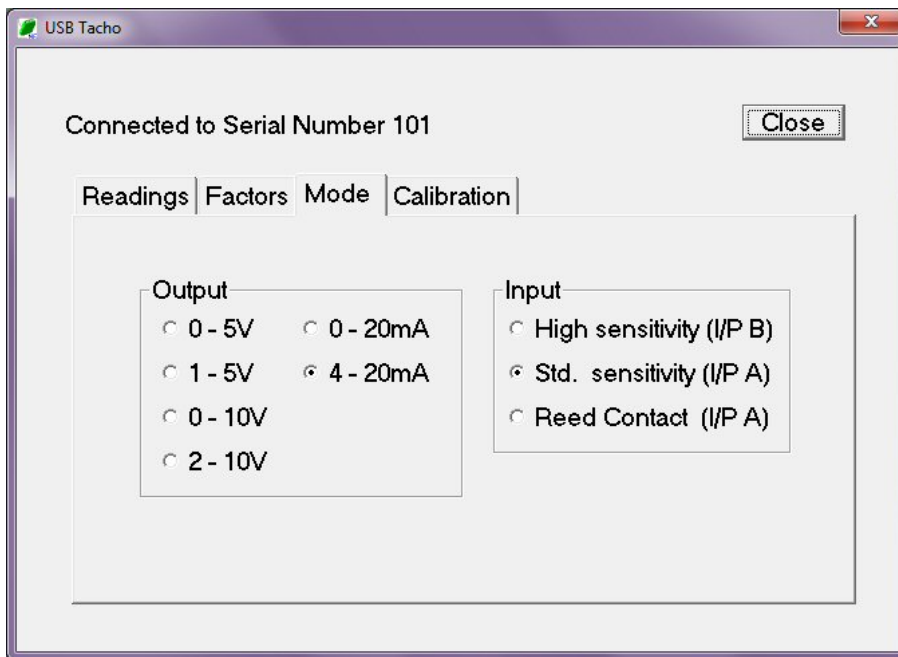
Via clearly labelled terminals

Setting up

Modules can be supplied factory pre-set to your operational parameters. Alternatively, connect to a PC or Laptop for simple and rapid initial set-up during installation

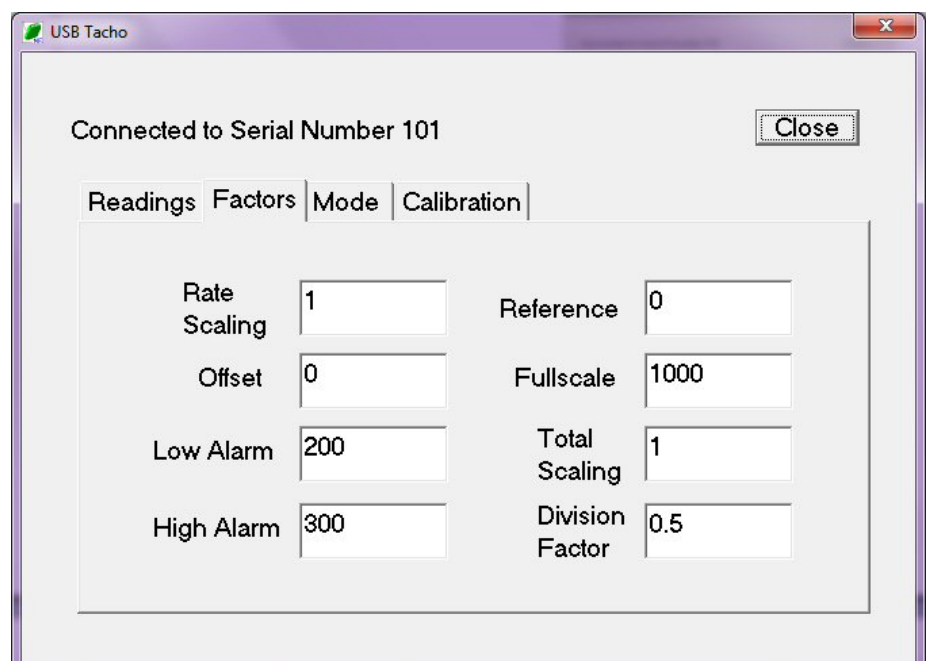
Software

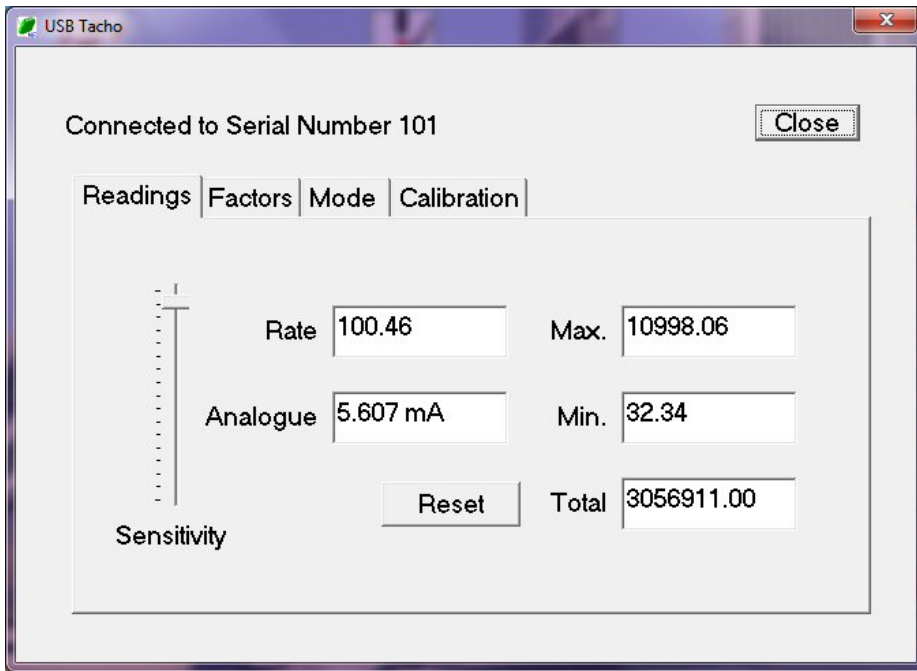
The application software is supplied free of charge



The required input and output functions are selected by just two clicks of a button

All required operational parameters, such as scaling factor, high and low alarms, etc. are entered via on-screen dialogue boxes, and once entered are stored in non-volatile memory.





In use the device will operate as a stand-alone module.

However, by connecting to the USB port, users can access an on-screen display that shows current operational status and the input sensitivity setting.

Additionally, maximum (peak-hold) and minimum rates and a cumulative scaled input pulse total are displayed.

These three values can be reset by clicking on the Reset button or by applying an external signal on the terminal block.

Specification

Power Supply

12V DC (clean) @ 180mA nominal (11.5V minimum, 30V maximum, reverse polarity protected). If power is not available from the installation, **Logitech** can provide a suitable low-cost stand-alone mains powered unit – contact our Sales Office for details

Signal Inputs

High sensitivity	User-adjustable from 10mV to 1V (protected to 100V)
Standard sensitivity	User-adjustable from 150mV to 13.5V (protected to 100V)
	(Measurable frequency range on High and Standard sensitivity inputs – 0.5Hz - 30kHz)
Impedance	15kΩ (minimum)
Reed Relay	Bounce protected. Input frequency 200Hz maximum

Signal Outputs (>15 bit resolution)

Analogue voltage output	User-selectable as 0-5V, or 1-5V, or 0-10V, or 2-10V
Analogue current output	User-selectable as 0-20mA, or 4-20mA (into 500Ω max.)
Digital output	5V TTL compatible square wave, frequency scaled output
Frequency out	K x frequency in. K = 0.0000001 to 1.

Alarm Outputs

User-definable Low and High alarms – open collector (200mA 60V DC maximum)

Calibration

Factory set to fully traceable National Standards

Connections

Power supply Screw terminals on top face or via dedicated connector in side face (mating line connector – not supplied – 2.1mm low voltage power supply plug, e.g. Lumberg NES/J21 or equivalent)

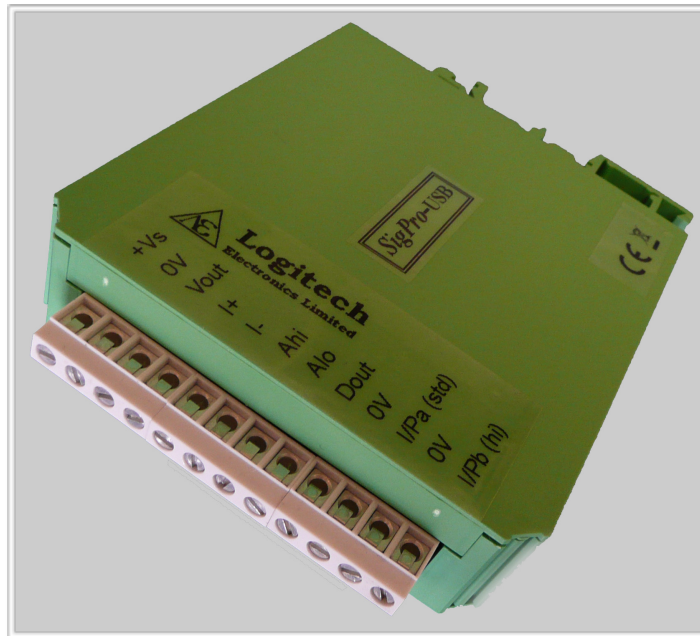
Inputs and outputs Clearly labelled external screw terminals on top face

USB 2.0 USB port in side face

Dimensions 22.5mm wide x 82mm high x 90mm deep (98mm including terminals)

Weight 100g nominal

Operating temperature 0°C to +70°C



MADE IN THE UK

Reliability, Guaranteed



Logitech Electronics Limited

e: sales@logitechelectronics.com

t: +44 (0)1952 820444

Design and Manufacture of Electronic Systems and Instrumentation. Supply of Sensors and Transducers

www.logitechelectronics.com

Lane End | Church Aston | Newport | Shropshire | TF10 9JJ | UK